



Vivid™ T8 VET

Cardiac and shared services.
Together like never before from GE.



Authorized Distributor
GE Healthcare



Scan with convenience.

The Vivid T8 VET is designed to be easy to operate and transport in many indoor environments. Its intuitive user interface is a true Vivid console, with Vivid applications, features, workflow, and reliability, simplified for ease of use.

- **Convenient control layout** – The touch screen, rotary dials, and animal management buttons are conveniently located, and all mode buttons are grouped together near the trackball.
- **Scan Coach** – Showing basic scanning techniques with graphic of probe position, schematic of anatomy and example clinical image.
- **Ready-to-go mobility** – Weighing just 58kg, with durable casters and push handles front and back, the Vivid T8 VET is easy to push and roll on tiled or carpeted floors.
- **Smart Standby** – In case of accidental shutdown or power failure, or just when you are moving the scanner to another room, the system automatically saves data and the system turns into “Standby” mode. When the power is restored, the system automatically turns on instantly, maintaining the exact system state prior to shutdown.
- **Ample transducer capacity** provides four RS transducer ports and four standard transducer holders, plus two optional ones.

Transducers

Comprehensive transducer selection

The Vivid T8 VET offers a 3Sc-RS transducer, a 6S-RS transducer, a 9T-RS transducer, a 12S-RS transducer and a P2D-RS transducer for cardiac imaging.

There is also a versatile shared service transducer selection including a 4C-RS transducer, an 8C-RS transducer, an E8C-RS transducer, a 9L-RS transducer, a L8-18i-RS transducer and a 12L-RS transducer.



Leverage Vivid cardiac IQ and functionality.

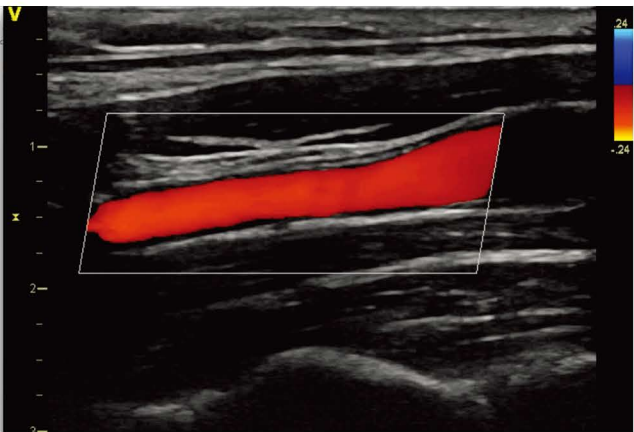
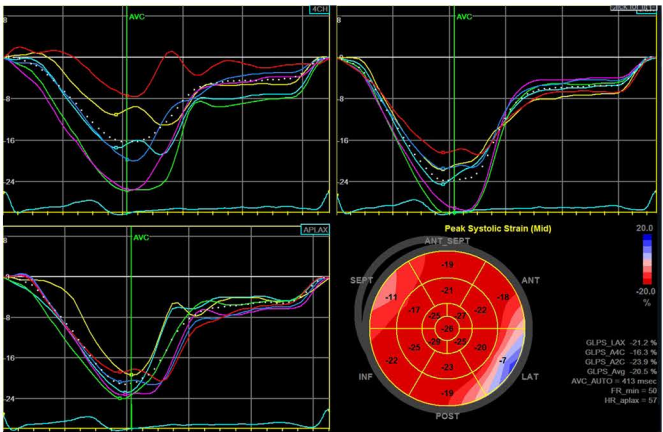
A feature-rich system with established Vivid software, the T8 VET boosts its cardiac imaging capabilities with advanced quantitative tools.

- **Tissue Velocity Imaging** captures dynamic information from moving heart tissue to quantify left ventricular function.
- **AutoEF¹** automatically assesses left ventricular ejection fraction using an automated, speckle-tracking ROI tool.
- **SmartStress¹** automatically adjusts settings to help enhance workflow, reproducibility, and diagnostic confidence.
- **Automated Function Imaging¹** assesses and quantifies left ventricular wall motion at rest, and calculates parameters to describe left ventricular wall function.
- **Tissue Tracking/Tissue Synchronization Imaging¹** enhances images for assessing delayed cardiac wall motion.
- **Strain /Strain Rate Imaging¹** helps enhance visual and quantitative recognition of dysfunctioning myocardial segments to help in evaluating regional systolic function in ischemic heart disease.
- **Complete cardiac transducer selection** includes 3Sc-RS, 6S-RS, 6Tc-RS, 9T-RS, 12S-RS and P2D-RS transducers.

Share services freely.

The flexible Vivid T8 VET delivers exceptional shared service image quality, with options to customize the system to your facility’s needs.

- **Auto IMT¹** provides automatic edge detection for intima-media thickness and auto-completes required measurements.
- **Virtual Convex¹** extends the field of view when using linear transducers.
- **LOGIQ™ View¹** increases the field of view to image large organs that typically can’t be seen in a single image.
- **B-Flow¹** provides advanced spatial and temporal resolution to help assess blood flow and vessel wall structure without the limitations of Doppler.
- **Blood Flow Imaging¹** helps enhance visualization of blood flow dynamics using a unique signal-processing algorithm.
- **Versatile shared service transducer selection¹** includes 4C-RS, 8C-RS, E8C-RS, L8-18i-RS, 12L-RS and L6-12-RS transducers.



The Vivid™ T8 combines the established cardiac imaging capabilities of GE Vivid systems with exceptional shared services performance of the LOGIQ™ systems. The result is a truly hybrid cardiovascular ultrasound system that is rugged, reliable, robust, and rich with features, yet still affordable and convenient to use.

For more information please contact your
GE Healthcare sales representative.

TAIWAN

GE Healthcare
6th Fl., No.8, Sec. 3, Minsheng E. Rd.,
Zhongshan Dist., Taipei City 104, Taiwan
T 886 2 2183 7195
F 886 2 2516 5282

AMERICAS

GE Healthcare
9900 West Innovation Drive Wauwatosa,
WI 53226 U.S.A.
T 1 888 202 5582

UNITED KINGDOM

GE Medical Systems Ultrasound 71
Great North Road Hatfield,
Hertfordshire AL9 5EN
T 44 1707 263570
F 44 1707 260065

© 2017 General Electric Company All rights reserved.

General Electric Company reserves the right to make changes in specifications and features shown herein, or discontinue the product described at any time without notice or obligation. Contact your GE Healthcare representative for the most current information. GE, the GE Monogram, Vivid, LOGIQ and InSite are trademarks of General Electric Company. GE Healthcare, a division of General Electric Company. GE Medical Systems, Inc., doing business as GE Healthcare.
JB48335US